

oligo
PROFESSIONNEL

CALURA
gloss

DEMI-PERMANENT LIQUID HAIR COLOUR

zero lift • shine • conditioning • alcohol and PPD free

COLORATION DEMI-PERMANENTE LIQUIDE

zéro éclaircissement • brillance • revitalisation • sans alcool et PPD

CALURA gloss

Versatility

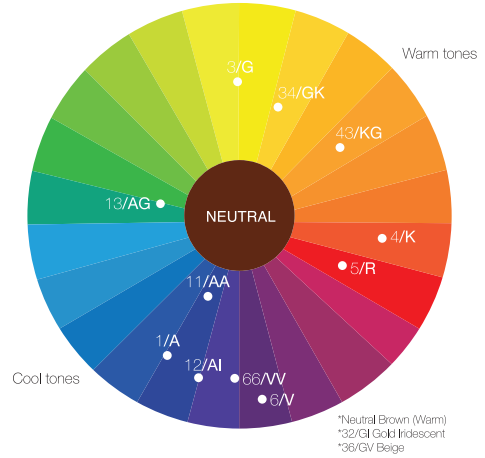
- Colour balance
- Tone pre-lightened hair
- Enhance colour of natural hair
- White hair blending
- Colour correction
- Enhance shine

Zero Lift

Clear 0-00

Dye free formula that offers shine and hydration; can be used alone or intermixed with any Calura Gloss shade.

Colour wheel



Mixing ratio 1:1

PROCESSING TIME	
Toning	3-10 minutes
Colour balancing	20 minutes*
White hair blending (up to 50%)	30-35 minutes

Processing times are to be used as guidelines only. For more vibrant results or for better white blending, process 15-20 minutes with plastic cap under pre-heated warm dryer. * Process up to 20 minutes. To achieve lighter colour deposit, either dilute shade with Clear or use a lighter shade.

Developer Options

- Calura Lotion Developer 7 volume (2%) offers a lotion-like consistency ideal for bottle application.
- Calura Cream Developers 7 volume (2%) and 13 volume (4%) offer a cream-like consistency for more control when applying with a bowl and brush.

Additives

Can be used to boost ash and violet series; can also be used alone but expect more intense results. On porous lighter levels, use as additive only.

-11/AA
-66/VV

White Hair Blending

- Up to 30%: a Neutral or Neutral Brown shade must be mixed with your desired shade(s) at a 1:1 ratio. Use equal parts Calura Gloss 7 Volume Developer (2%).
- Up to 50%: an Intense Neutral shade must be mixed with your desired shade(s) at a 1:1 ratio. Use equal parts Calura Gloss 13 Volume Developer (4%).

Series and Bases

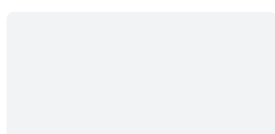
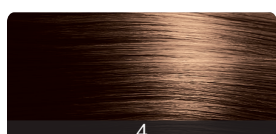
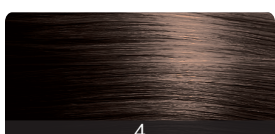
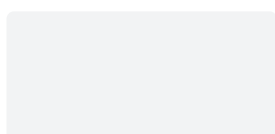
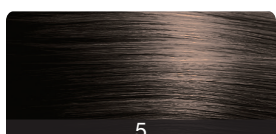
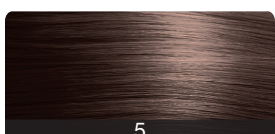
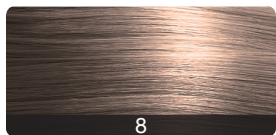
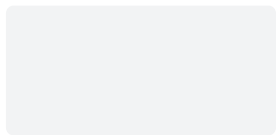
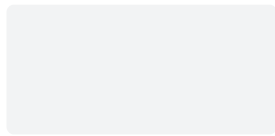
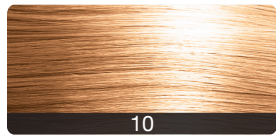
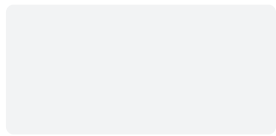
Neutral	33%	33%	33%
Intense Neutral	33%	33%	33%
Neutral Brown	50%	25%	25%
1 / A	100%		
11 / AA	100%		
12 / AI	75%	25%	
13 / AG	80%	20%	
3 / G	100%		
32 / GI	50%	25%	25%
34 / GK	75%	25%	
36 / GV	75%	25%	
4 / K	100%		
43 / KG	75%	25%	
5 / R	100%		
6 / V	100%		
66 / VV	100%		

NEUTRAL
NEUTRE

INTENSE NEUTRAL
NEUTRE INTENSE

NEUTRAL BROWN
NEUTRE BRUN

ASH
CENDRÉ
1/A



Shades are for visual reference only. Final results may vary. / Les nuances sont pour référence visuelle seulement. Les résultats peuvent varier.

INTENSE ASH
CENDRÉ INTENSE
11 / AA

PEARL
PERLE
12 / AI

MATTE
MAT
13 / AG

GOLD
DORÉ
3 / G

10 - 12 / 10AI

9 - 11 / 9AA

9 - 12 / 9AI

9 - 3 / 9G

8 - 11 / 8AA

8 - 12 / 8AI

8 - 13 / 8AG

7 - 11 / 7AA

7 - 12 / 7AI

7 - 13 / 7AG

7 - 3 / 7G

6 - 11 / 6AA

6 - 13 / 6AG

5 - 13 / 5AG

5 - 3 / 5G

4 - 13 / 4AG

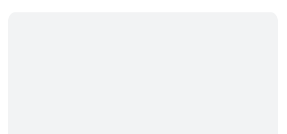
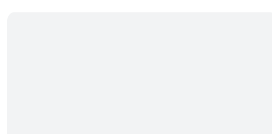
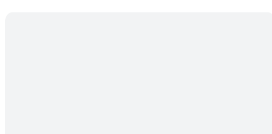
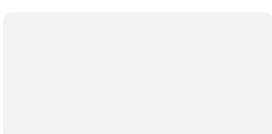
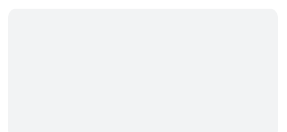
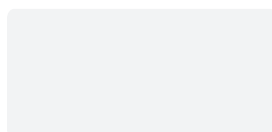
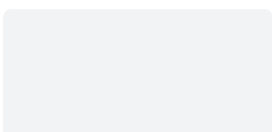
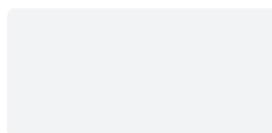
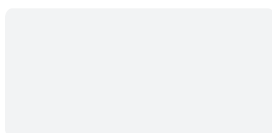
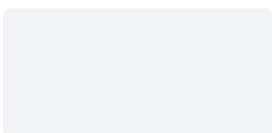
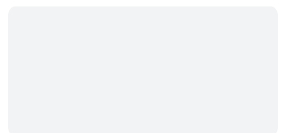
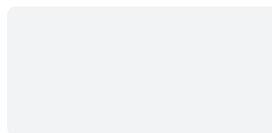
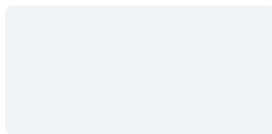
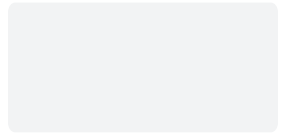
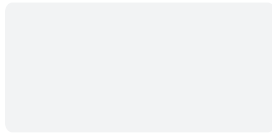
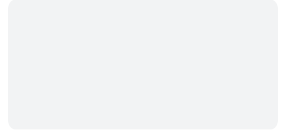
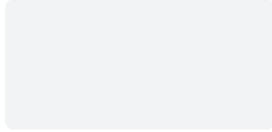
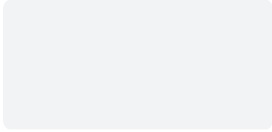
3 - 3 / 3G

GOLD IRIDESCENT
DORÉ IRISÉ
32 / GI

GOLDEN COPPER
DORÉ CUIVRÉ
34 / GK

BEIGE
36 / GV

COPPER
CUIVRÉ
4 / K

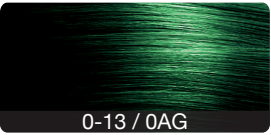
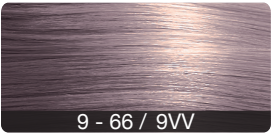
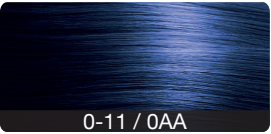
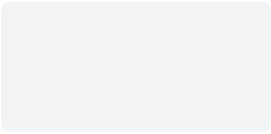


**COPPER GOLD
CUIVRÉ DORÉ**
43 / KG

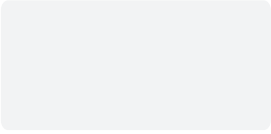
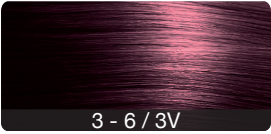
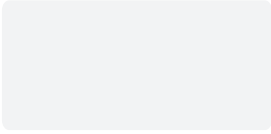
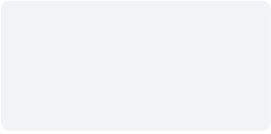
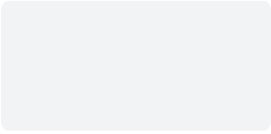
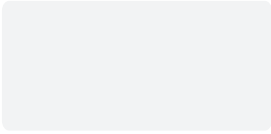
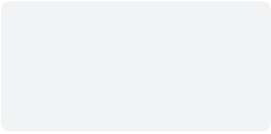
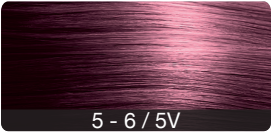
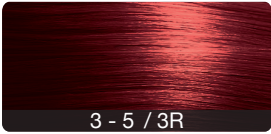
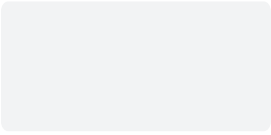
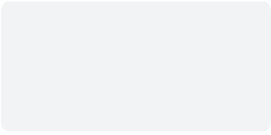
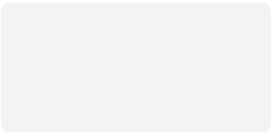
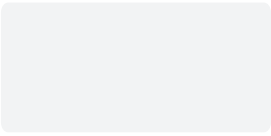
VIOLET
6 / V

**INTENSE VIOLET
VIOLET INTENSE**
66 / VV

MIXERS



**RED
ROUGE**
5 / R





Questions ?

1.877.837.6426 / oligopro.com