

**YES, IT IS POSSIBLE TO
MAINTAIN THE INTEGRITY
OF THE HAIR DURING AN
ULTRA BLEACHING
PROCESS!**

K Recovery not only protects the hair from damage from bleach, it provides superior treatments as its formula is rich in nano technology actives and contains:

**KERATIN, COLLAGEN, SERICIN
NANO REPAIR, POLISIL and GLOW SYSTEM.**

**3D
SHINE** EFFECT



**IN THE BEST SALONS
IN THE WORLD**

THIS VERSATILE PRODUCT CAN BE USED IN NUMEROUS WAYS IN THE SALON::

- ✓ **BLOW DRY RESTORE:** ALLOWS RECUPERATION OF DAMAGED HAIR WHILE BLOW-DRYING HAIR STRAIGHT.
- ✓ **KERATIN RECOVERY + KERATIN VAPOR = "KERATIN SHOCK" TREATMENT:** INCREASES RESISTANCE AND FLEXIBILITY OF THE HAIR.
- ✓ **AND SO MUCH MORE...**

PROTECTION DURING BLEACHING PROCESS

K Recovery TRUSS is a gel-based unique formula with fast absorption and high concentration of Nano technology active ingredients that recover and restore extremely damaged hair. This versatile product can be used in many different ways, and the reason its formula is so powerful is due to its active ingredients:

Keratin: Hydrolyzed protein with fast absorption; restores and increases resistance, promoting healthy hair.

Collagen: Acts alongside Keratin, restoring elasticity and flexibility.

Sericin: Most important Nano Amino Acid in Keratin's protein chain. Extracted from silk and currently the most efficient active ingredient in restoring chemically damaged hair (coloring, bleaching or straightening).

Nano Repair: Bio Affinity elastic molecule; restores and acts as a "filler" on the inside of the hair fiber, as well as seals the hair cuticle. Restores and protects.

Polisil: acts on the cuticle; Hydrates and forms a protective layer which maintains the hair cuticle aligned.

Glow System: Intelligent technology active ingredient that nourishes, providing extraordinary 3D gloss shine and color protection.



K Recovery TRUSS added to bleach mixture.

• **Applications:** approximately 185.

1 - Prepare mixture: **1 part Bleaching Powder (2 oz.)** + **2 parts Hydrogen Peroxide (7 oz.)**

2 - Add **1 pump (Quarter size)** of **K Recovery TRUSS** to mixture.

Application of K Recovery for Hair Protection

• **Applications:** approximately 80.

Apply **K Recovery TRUSS** on dry or damp hair, on sections that the bleach will be applied on later on. Blow dry 100% prior to application of bleach mixture.

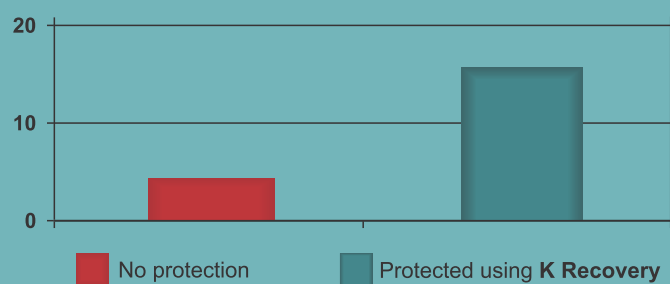
Tip: Toner having been applied or not, it is important to rinse hair with **Blond Shampoo TRUSS**. A TRUSS shock treatment product should be used such as: **Hydra Color, Deluxe Spray** or **Lipidic Work Station**. After rinsing, use **Blond Mask TRUSS** or **Intensive Nutrition Work Station TRUSS**. Finish off by blow-drying the hair straight using a **Thermal Protector TRUSS** of your preference.

Avoid unnecessary damage during bleaching:

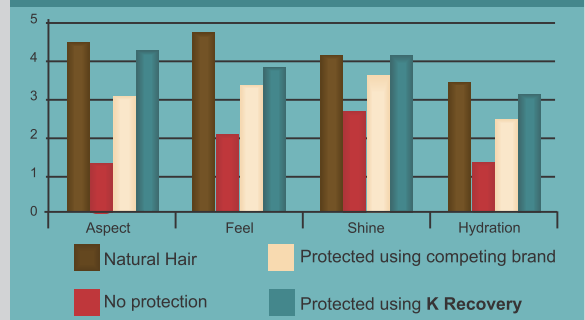
Clients dream of having blond, healthy hair, and in order to achieve that bombshell look, bleach is a necessary evil that weakens and damages the hair fiber. Now there is a product that protects the hair fiber during the bleaching process and provides nothing less than incredible results, which is exactly what professionals and clients expect.

Take a look at tests performed in our laboratory:

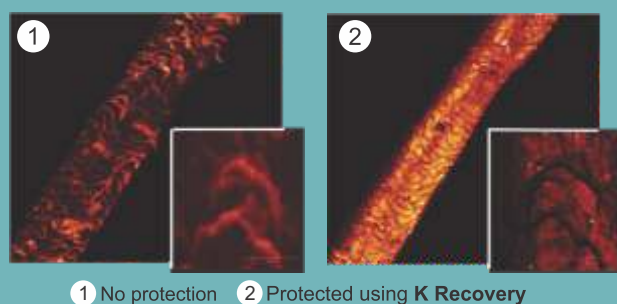
Examination Post-Bleaching



Natural Hair



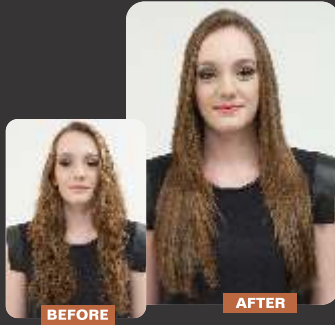
Examination of the Sealing of the Hair Cuticle



Comparing Locks of Hair



BLOW DRY RESTORE

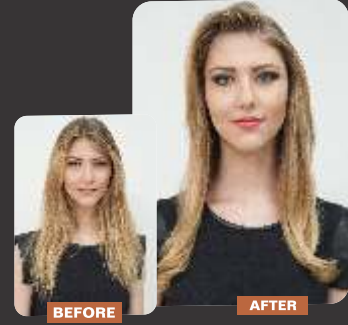


Add on service for blow-dries.

• **Applications:**

- **1 pump (Quarter size)** - approximately **185**.
- **Half ounce** – approximately **93**.

KERATIN RESTORE



Keratin Shock Treatment:

add on service that penetrates deeply into the hair fiber.



- **Applications:** approximately **13 (1.5 oz.)**



1 - Wash the hair with **Shampoo** and **Conditioner TRUSS** according to hair type.



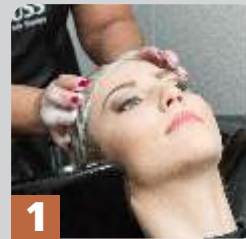
2 - Apply **1 to 2 pumps** of **K Recovery TRUSS** throughout entire length of the hair.



3 - Blow dry hair straight.



Tips: For damaged, dry and unruly hair, apply **Amino Work Station TRUSS** followed by flat-ironing the hair with the **Exclusive Steam Flat Iron TRUSS** used with the **Restore Complex TRUSS** (does not allow dehydration of the hair).



1 - Wash the hair with **Clarifying Shampoo TRUSS** (Thick, resistant or virgin hair) or with **Bidimensional Shampoo TRUSS** (porous, damaged or chemically treated hair). Remove excess water.



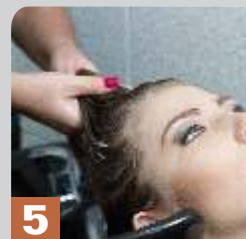
2 - Apply **K Recovery** throughout entire length of the hair (approx. **1.5 oz.** for medium length hair).



3 - Massage gently from ends to roots. **Do not rinse.**



4 - Flat-iron the hair with the **Exclusive Steam Flat Iron TRUSS** used with the **Restore Complex TRUSS**, piece by piece. Do not rinse.



5 - Apply **Intensive Nutrition Work Station TRUSS**. Massage gently for **5 minutes**. Rinse. Apply a **Thermal Protector TRUSS** of your preference. Blow dry and style as desired.

ATENÇÃO
When using the Flat Iron at the back bar, do not allow appliance to come in contact with water.



BECOME A CERTIFIED TRUSS DISTRIBUTOR TODAY!



@trusshairusa



www.usa.trusscosmetics.com



+1-844-TRUSS11